

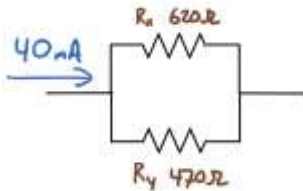
DC Current Divider Rule

Given a parallel circuit consisting of a 6V source, a 30Ω , and a 60Ω resistor determine the current through each resistor using traditional parallel circuit analysis techniques.

Write the general use formula for the current divider rule. Identify quantities inside the formula.

Use the current divider rule to solve for current through each resistor in the above example. Comment on the advantages of the current divider rule over traditional parallel circuit analysis techniques.

Use the current divider rule and Kirchoff's Current Law to solve for current through each resistor.



Use the current divider rule to solve for current through R_2 and R_3 .

