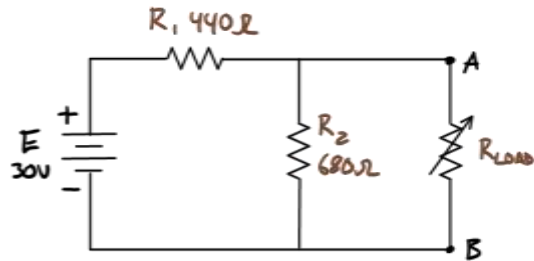


## DC Maximum Power Transfer Theorem

Identify at what value a load resistor experiences maximum power from a circuit.

Determine the load resistor that will experience maximum power. At conditions of maximum power determine voltage, current and power. Determine the same properties when  $R_{LOAD}$  is half and twice this value. Comment on voltage, current, and power at and at other than maximum power conditions.



Draw a graph of voltage, current, and power for a range of load resistance values. Identify peak power.

Determine efficiency at maximum power conditions. Draw a plot of efficiency as a function of load resistance.