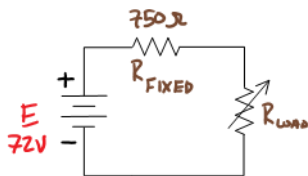


## DC Source Conversion

Convert this current source to an equivalent voltage source. Determine electrical properties experienced by a  $120\Omega$  load for both versions.



Convert this voltage source to an equivalent current source. Determine electrical properties experienced by a  $480\Omega$  load for both versions.



Convert this current source to an equivalent voltage source. Determine electrical properties experienced by a  $500\Omega$  load for both versions.



Convert this voltage source to an equivalent current source. Determine electrical properties experienced by a  $480\Omega$  load for both versions.

