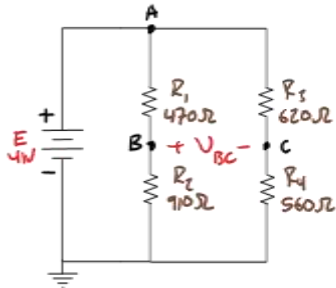
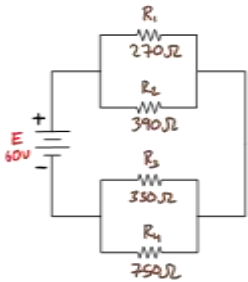


Series-Parallel DC Circuits Examples: Level 1

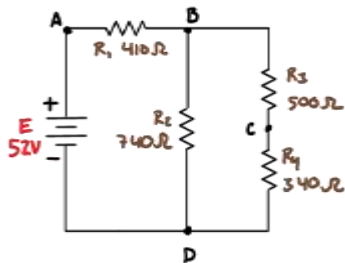
Determine the electrical properties for all elements in this system. Additionally, determine V_{AB} and V_A , V_B , and V_C with respect to ground.



Determine the electrical properties for all elements in this system. Additionally, determine electrical properties in this system when R_2 is shorted out and R_3 is opened.



Determine the electrical properties for all elements in this system. Additionally, determine power.



Determine the electrical properties for all elements in this system for 3 scenarios. Additionally determine the efficiency of this system given any power dissipated by R_x is considered a loss to this system.

Scenario 1: SW1 closed

Scenario 2: SW2 closed

Scenario 3: SW1 and SW2 closed

