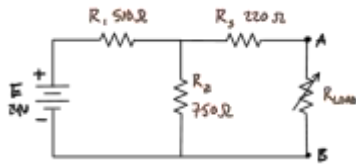
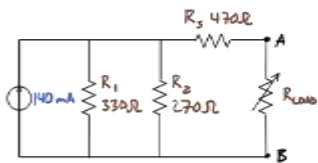


## DC Thevenin's and Maximum Power Transfer Theorem Examples

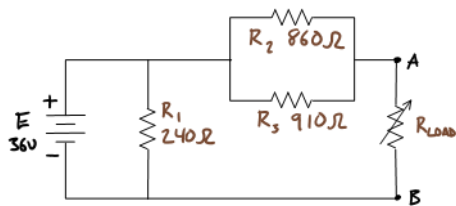
Determine the Thevenin's equivalent circuit seen by the variable load resistor. Determine the load resistor value that receives maximum power. At conditions of maximum power determine voltage, current, and power.



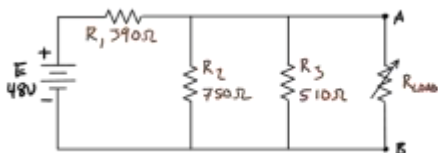
Determine the Thevenin's equivalent circuit seen by the variable load resistor. Determine the load resistor value that receives maximum power. At conditions of maximum power determine voltage, current, and power.



Determine the Thevenin's equivalent circuit seen by the variable load resistor. Determine the load resistor value that receives maximum power. At conditions of maximum power determine voltage, current, and power.



Determine the Thevenin's equivalent circuit seen by the variable load resistor. Determine the load resistor value that receives maximum power. At conditions of maximum power determine voltage, current, and power.



Determine the Thevenin's equivalent circuit seen by the variable load resistor. Determine the load resistor value that receives maximum power. At conditions of maximum power determine voltage, current, and power. (HINT: Use the superposition theorem to determine  $E_{TH}$ .)

