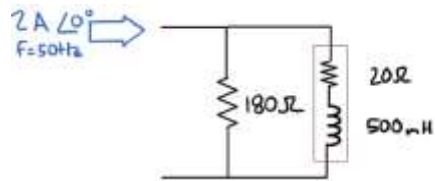


AC Current Divider Rule (8:44)

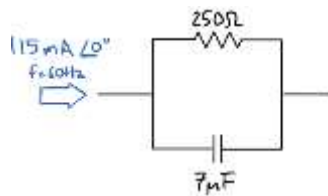
Identify the formula used for the AC Current Divider Rule.

Use the AC Current Divider Rule to solve for current through each element in the parallel AC circuit below.



Use Ohm's Law for the above circuit to check and confirm calculations made using the AC Current Divider Rule.

Use the AC Current Divider Rule to solve for current through each element in the parallel AC circuit below.



Use Kirchhoff's Current Law and/or Ohm's Law for the above circuit to check and confirm calculations made using the AC Current Divider Rule.