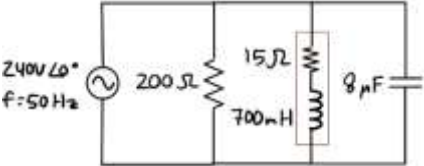
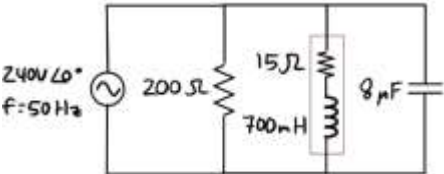


Parallel AC Circuits Examples (10:15)

For the parallel AC circuit below, determine the impedance of each element, the voltage across each element, the current through each element, the total impedance, and the source current.



For the parallel AC circuit below, determine the impedance of each element, the voltage across each element, the current through each element, the total impedance, and the source current.



For the parallel AC circuit below, determine the impedance of each element, the voltage across each element, the current through each element, the total impedance, and the source current.

